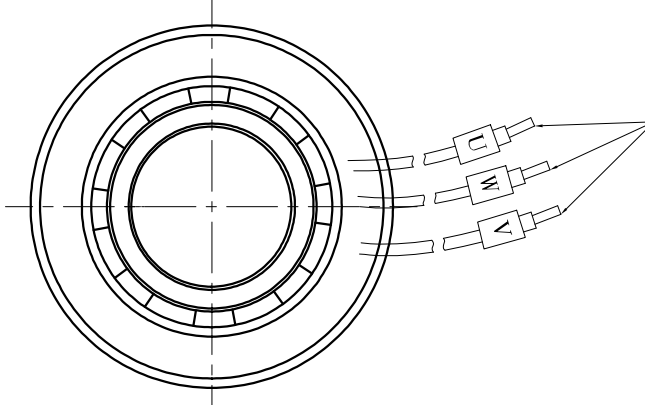


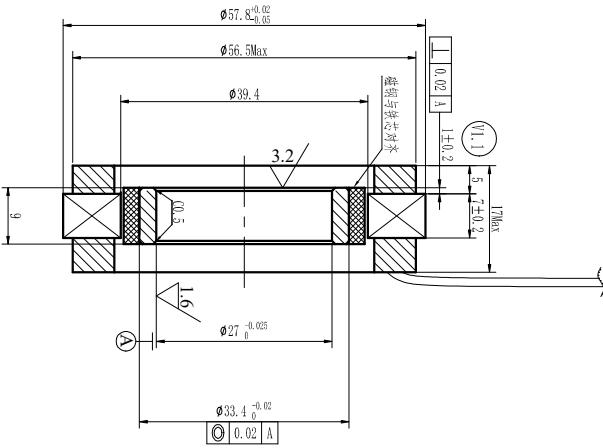
技术要求:
 定子引出线按GB/T 7345-2008要求:
 对定子三相线, 每根引出线应能承受9.0N的拉力;
 引出线不能断开, 绝缘层和线芯不能损坏。

动力线端子: (剥线5 搪锡)



FUNCTION	COLOR
MOTOR U	BLUE (200NM)
MOTOR V	BROWN (200NM)
MOTOR W	PURPLE (200NM)

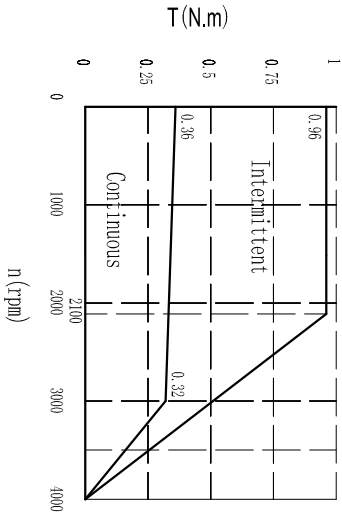
Power Wire



Technical Data (V1.2)

No. of poles	16	
DC Link Voltage U _c (DC Link)	48	
Rated Power P _N (W)	100	
Rated torque T _N (N.m)	0.32	
Rated Speed n (rpm)	3000	
Rated Current I _N (A)	2.55	
Maximum torque T _M (N.m)	0.96	
Maximum Current I _M (A)	11	
Standstill torque T _s (N.m)	0.36	
Standstill current I _s (A)	3.3	
Resistance line-line R _s (Ω)	±10%	
Inductance line-line L _s (mH)	±20%	
Electrical time constant τ _e (ms)	1.79	
Mechanical time constant τ _m (ms)	0.93	
Voltage constant K _v (V/krpm)	1.83	
Torque constant K _t (Nm/A)	8	
Rotor moment of inertia J _m (kg.cm ²)	0.132	
Insulation class	F	
Weight (kg)	0.096	
	0.11	
Feet back device		
Temperature Sensor		
Cooling method	Totally enclosed non-ventilated	
Temperature	guarantee the measured winding temperature is between 20°C and 120°C	
Humidity	Below 90%RH (No deicing)	
Environment	For any active gas, combustible gas, oil drop, ash	
Installation altitude	IP 10 100%rated power, above 1000m, 1.5% power decreasing per 100m, max. 3000m	

Performance Curve



DESCRIPTION OR CHANGE

VER

V1.2

K1230105

ZT

SI

23.3.21

ZZJ

22-03-02

307080332SS

外形图

V1.2

REV

更改电参数

ECN NO.

DRN

APP D

DATE

CHECK

LSJ

22-03-02

USED ON

FWC05707-0010-3027N-80S00

TOLERANCES

DECIMALS: ±0.5

ANGULAR: ±0° 30'

MATERIAL

CONTR.

SCALE

SL

22-03-02

DWG NO.

REV

V1.2

UNITS: mm

±0.1

DO NOT SCALE DRAWING

FIRST ANGLE PROJECTION

SHEET

OF

KINAVO MOTOR