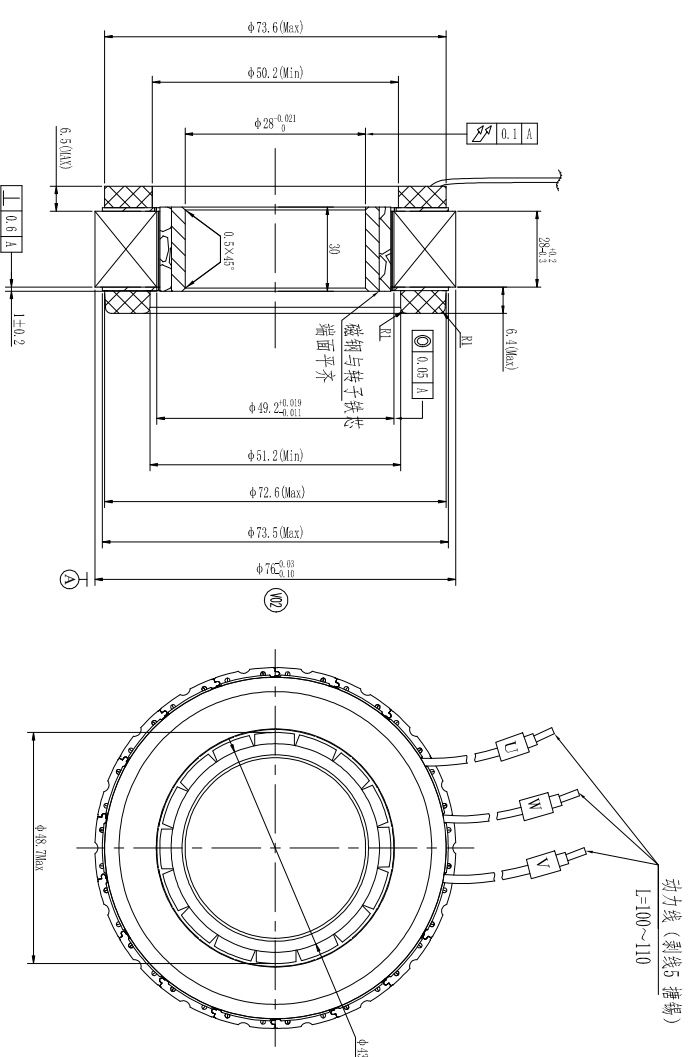


技术要求：
 定子引出线按GB/T 7345-2008要求：
 对定子三相线，每根引出线应能承受24.0N的拉力，
 试验后，引出线不能断开，绝缘层和线芯不能损坏。

FUNCTION	COLOR
MOTOR U	BLUE (14AWG)
MOTOR V	BROWN (14AWG)
MOTOR W	PURPLE (14AWG)

Power Wire



Technical Data

No. of poles		16
DC Link Voltage U _c (DC link)		48
Rated Power P _n (W)		635
Rated torque T _n (N.m)		1.6
Rated Speed n (rpm)		3790
Rated Current I _n (A)		15.2
Maximum torque T _c (N.m)		5.27
Maximum current I _c (A)		52
Standstill torque T _s (N.m)		1.76
Standstill current I _s (A)		16.7
Special working point		4N.m at 3000rpm 37A for 5 seconds
Resistance time-time R _t (s)		±20% 0.083s@ 25°C
Inductance time-time L _t (ms)		±20% 0.237
Electrical time constant τ_e (ms)		2.85
Mechanical time constant τ_m (ms)		1.3
Voltage constant K _v (V/rpm)		±3% 6.9
Torque constant K _t (Nm/A)		0.114
Rotor moment of inertia J _r (kg·cm ²)		1.2
Insulation class		F
Weight (kg)		0.98
Cooling method		Totally enclosed non-ventilated
Temperature		guarantee the measured winding temperature is between -20°C and 120°C
Humidity		Below 90%RH (no dewing)
Environment		For any active gas, combustible gas, oil droplets.
Installation altitude		IP 70 100% rated power, above 1000m; 1.5% power decreasing per 100m, max. 400m

Environmental conditions

REV	ECON NO.	DRN	APPD	DATE	DESIGN	DATE	P/N
					ZZJ	20-12-10	307080359SS
					CHECK		
					WYD	20-12-10	Outside Drawing
					APPD		
					SL	20-12-10	DWG NO. REV V1.0
					SCALE		
					SHEET		

UNLESS OTHERWISE SPECIFIED
 TOLERANCES: ANGULAR: ±0.5°
 DECIMALS: ±0.25
 .xx ±0.1
 .xxx ±0.1
 UNIT: mm
 DO NOT SCALE DRAWING

KINAVO MOTOR