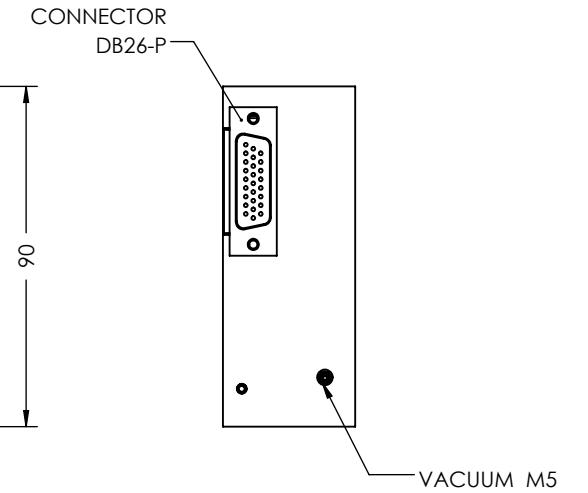
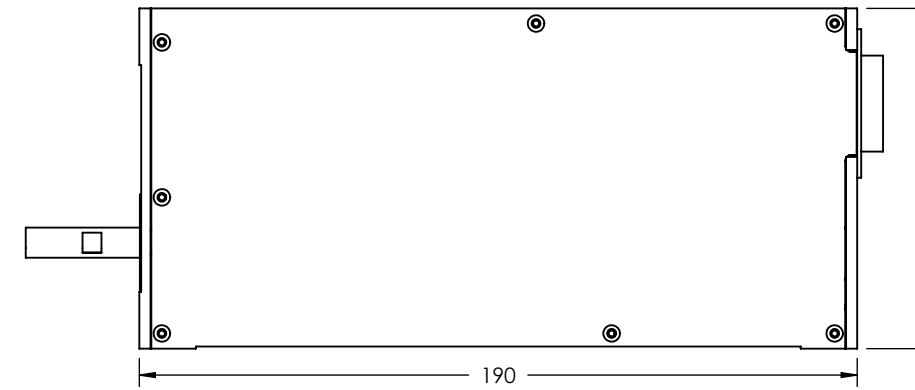
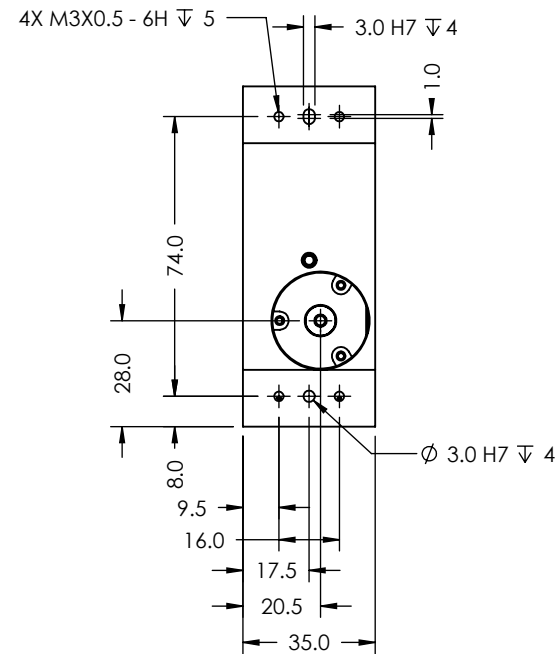
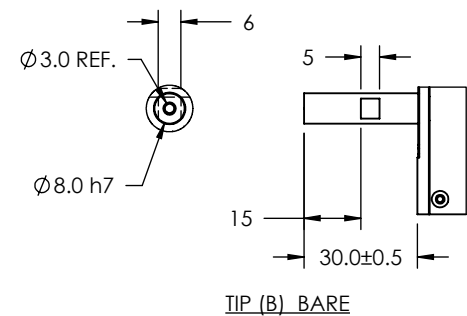
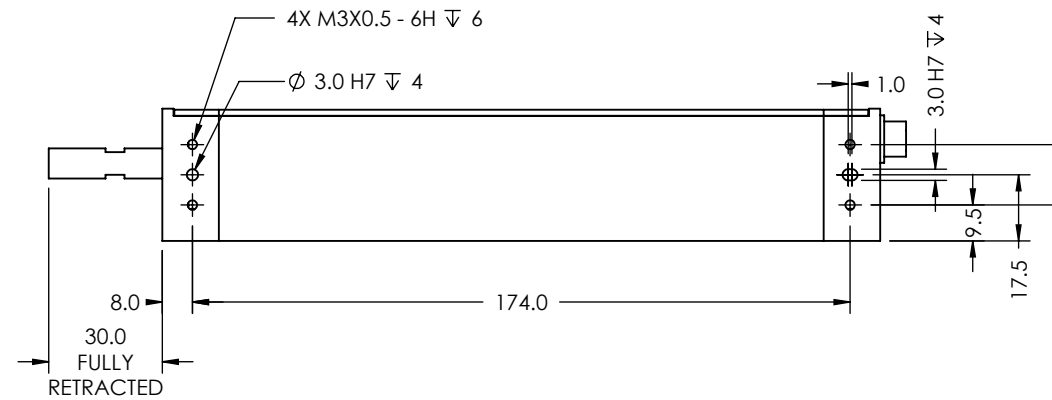


NOTES (UNLESS OTHERWISE SPECIFIED)

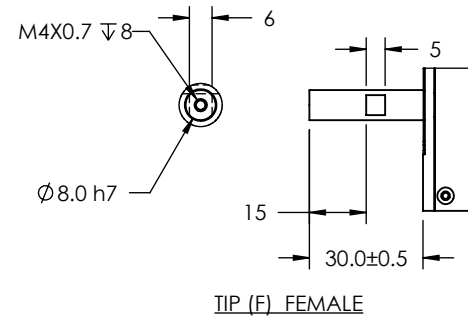
- 1. ALL DIMENSIONS APPLY AFTER PLATING.
- 2. LINEAR SPECIFICATIONS:
 LINEAR STROKE: 25.0 mm
 FORCE CONSTANT: 7.5 N/A
 PEAK FORCE: 12 N @ 1.6A (24Vdc)
 COIL DC RESISTANCE: 14 Ohm @ 22°C
 ENC. RESOLUTION(+A/-A;+B/-B): 5, 1, 0.1 μm
 ENCODER ACCURACY: ±25 μm
- 3. THETA SPECIFICATION: (MICRO-MO 2342-024)
 ROTATION ANGLE: 360°
 PEAK TORQUE: 0.085 Nm (@ 24 Vdc)
 TORQUE CONSTANT: 0.026 Nm/ A
 MAXIMUM RPM: 1000 (WITH 0 LOAD & VACUUM)
 ENCODER RESOLUTION: 20 K CPR
 ENCODER ACCURACY: ±5 COUNTS (ZERO BACKLASH)
- 4. MOVING MASS: 320 grams
- 5. TOTAL MASS: 1.55 kg
- 6. OPERATING TEMPERATURE: -10°C TO +65°C
 VACUUM AVAILABLE AT EXTERNAL CONNECTION



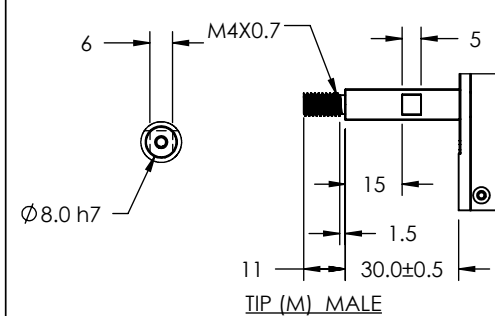
PIN No	Details
1	(L) PH. A+
2	(L) PH. B+
3	(L) PH. Z+
4	NC
5	NC
6	I/O RTN
7	(R) PH. B+
8	(R) PH. A+
9	(R) PH. I+
10	(L) PH. A-
11	(L) PH. B-
12	(L) PH. Z-
13	N/C(R) HOME
14	LIMIT +
15	LIMIT -
16	(R) PH. B -
17	(R) PH. A -
18	(R) PH. I -
19	+5 VDC
20	5V RTN
21	(L) COIL+
22	(L) COIL+
23	(L) COIL -
24	(L) COIL -
25	(R) MOTOR -
26	(R) MOTOR +
PIN No 13: NC (W/O GEAR)	



TIP (B) BARE



TIP (F) FEMALE



TIP (M) MALE

REF. NUMBER	XXXX
CONTRACT	XXXX

UNLESS OTHERWISE SPECIFIED
 ALL DIMENSIONS ARE IN MM
 BREAK EDGES AND REMOVE BURRS
 TOLERANCES
 X: ±0.5 X.X: ±0.1
 X.XX: ±0.03 ANGLE: ±0.1°
 CONCENTRICITY: ±0.025
 ROUNDNESS: ±0.025
 EDGE BREAKS: 0.2 MAX
 ALL DIMENSIONS AND TOLERANCES ARE FINAL

MATERIAL: ALUMINUM 6061-T6
 FINISH: ELECTROLESS NICKEL
 MACHINE FINISH: 1.6
 INTERPRET PER: ASME Y14.5-2009
 THIRD ANGLE PROJECTION

NAME	DATE
XX	XX/XX/XX
DWN BY	XX
CHK BY	XX
ENG APP	
MFG APP	
QA APP	

SMAC 5807 VAN ALLEN WAY
 CARLSBAD CA, 92008
 (760) 929-7588

TITLE: MOVING COIL ACTUATORS

PART NO: LAR35-025-55-1

SIZE: B SCALE: 1:2 DO NOT SCALE SHEET: 1/1

REV: C