

4 3 2 1

NOTES (UNLESS OTHERWISE SPECIFIED)

1. ALL DIMENSIONS APPLY AFTER PLATING.
2. BREAK ALL SHARP EDGES AND REMOVE BURRS.
- 3 ALL DIMENSIONS ARE IN mm UNLESS OTHERWISE NOTED.
4. LINEAR STROKE: 50 +1/-0mm
5. PEAK FORCE: AVG. 45N (48V@1.6A)
6. FORCE CONSTANT: AVG. 30N/A@48V
7. COIL RESISTANCE: 29-30 ohm
8. INDUCTANCE: 20.45 mH
9. ENCODER RESOLUTION: 5,1,um
10. ENCODER REPEATABILITY: ± 4 ENC. COUNTS
11. MOVING MASS: 0.335kg
12. TOTAL MASS: 2.575kg
13. OPERATING TEMPERATURE: 0°C TO 65°C

DB 26P PINOUT

PIN	FUNCTION
1	(AXIS 1) PH. A+
2	(AXIS 1) PH. B+
3	(AXIS 1) PH. Z+
4	NC
5	NC
6	I/O RTN
7	NC
8	NC
9	NC
10	(AXIS 1) PH. A-
11	(AXIS 1) PH. B-
12	(AXIS 1) PH. Z-
13	NC
14	NC
15	NC
16	NC
17	NC
18	NC
19	+5VDC
20	5V RTN
21	(AXIS 1) COIL +
22	(AXIS 1) COIL +
23	(AXIS 1) COIL -
24	(AXIS 1) COIL -
25	NC
26	NC

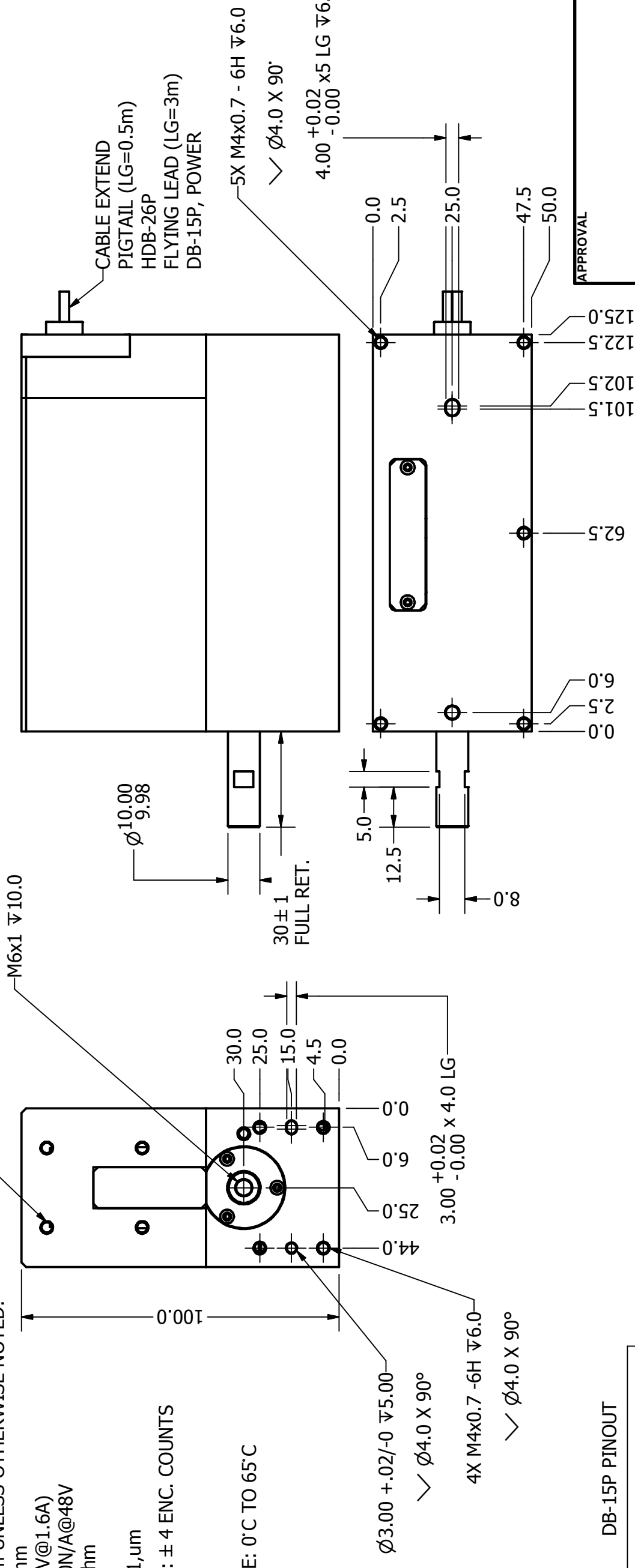
DB-15P PINOUT

PIN	FUNCTION
1	PH. A+
2	PH. Z+
3	PH. B+
4	+5V
5	NC
6	NC
7	NC
8	NC
9	PH. A-
10	PH. Z-
11	PH. B-
12	5V RTN
13	5V RTN
14	NC
15	NC

POWER

No	DETAIL
1	V RTN
2	+ V
3	COIL +
4	COIL -

THESE FOUR HOLES OPTIONAL BY MOD ONLY



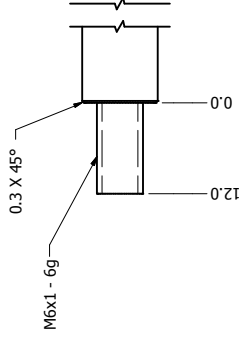
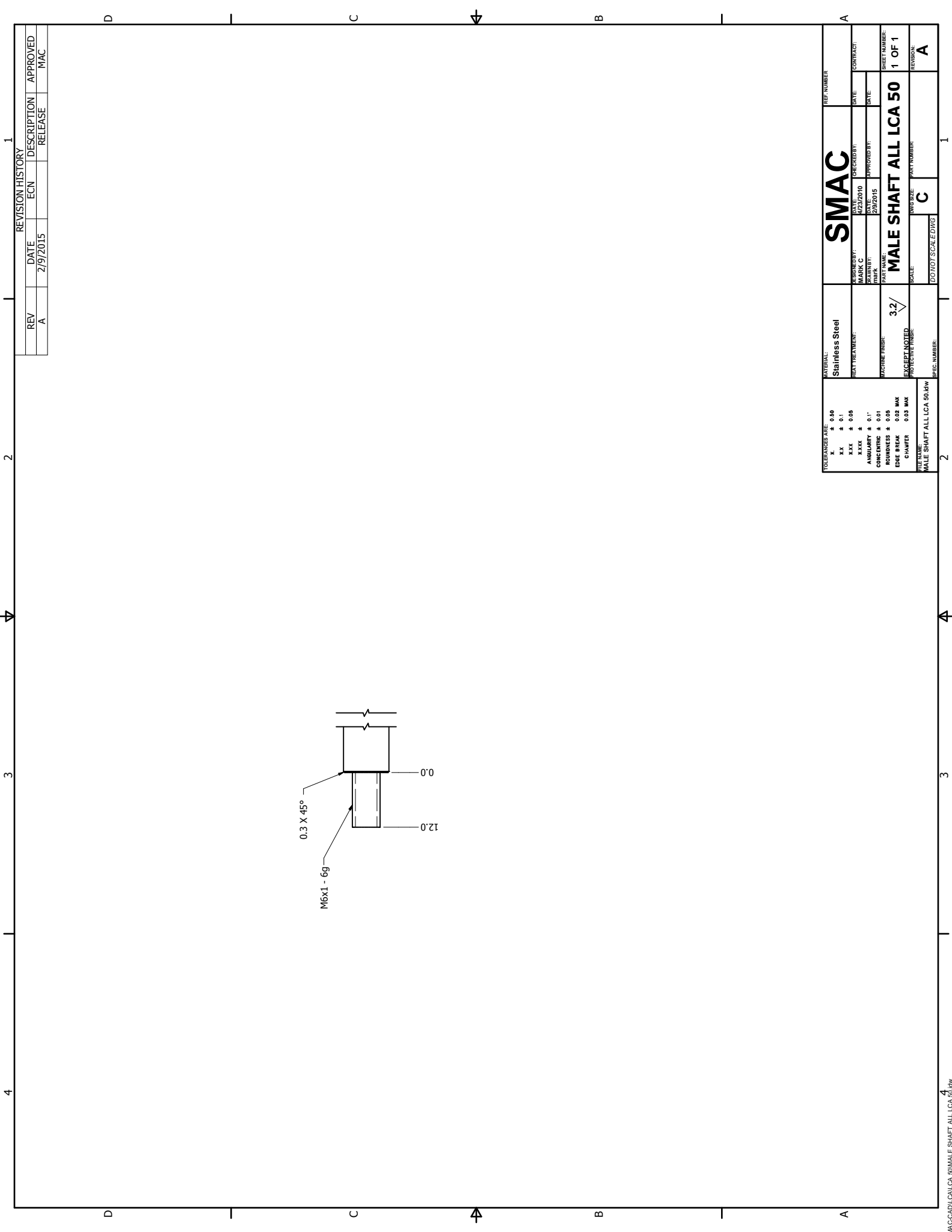
SIGNATURE NEEDED FOR ORDER APPROVAL
SIGN: _____ **DATE:** _____
APPROVAL NOT RECEIVED WITHIN 48 HOURS MAY AFFECT DELIVERY

<p>TOLERANCES ARE:</p> <p>X. ± 0.50</p> <p>X.X ± 0.1</p> <p>X.XX ± 0.05</p> <p>X.XXX ±</p> <p>ANGULARITY ± 0.1°</p> <p>CONCENTRIC ± 0.01</p> <p>ROUNDNESS ± 0.05</p> <p>EDGE BREAK 0.02 MAX</p> <p>CHAMFER 0.03 MAX</p>		<p>MATERIAL:</p> <p>HEAT TREATMENT:</p> <p>MACHINE FINISH:</p> <p>EXCEPT NOTED PROTECTIVE FINISH:</p>		<p>REF. NUMBER</p> <p>CONTRACT:</p>	
<p>SMAC</p>		<p>DESIGNED BY: MARK C</p> <p>DRAWN BY: MARK C</p> <p>PART NAME: LCA50-050-7</p>		<p>DATE: 12/16/2010</p> <p>DATE: 12/21/2010</p> <p>APPROVED BY:</p>	
<p>FILE NAME: LCA 50-050-7_C.idw</p>		<p>SCALE: B</p> <p>DWG SIZE: LCA 50-050-7</p>		<p>SHEET NUMBER: 1 OF 1</p> <p>REVISION: C</p>	

B A

A B

4 3 2 1



REV	DATE	ECN	DESCRIPTION	APPROVED
A	2/9/2015		RELEASE	MAC

REVISION HISTORY

SMAC DRAWN BY: MASON G CHECKED BY: MASON G DATE: 02/26/2010 DATE: 02/26/2010 PART NAME: MALE SHAFT ALL LCA 50 SCALE: 1:1 REF. NUMBER: A		CONTRACT: DATE: DATE: SHEET NUMBER: 1 OF 1 REVISION: A	
MATERIAL: Stainless Steel FINISH: 3.2/ EXCEPT NOTED PROTECTIVE FINISH SPEC. NUMBER: MALE SHAFT ALL LCA 50.04W		PART NUMBER: C DO NOT SCALE DWG	