

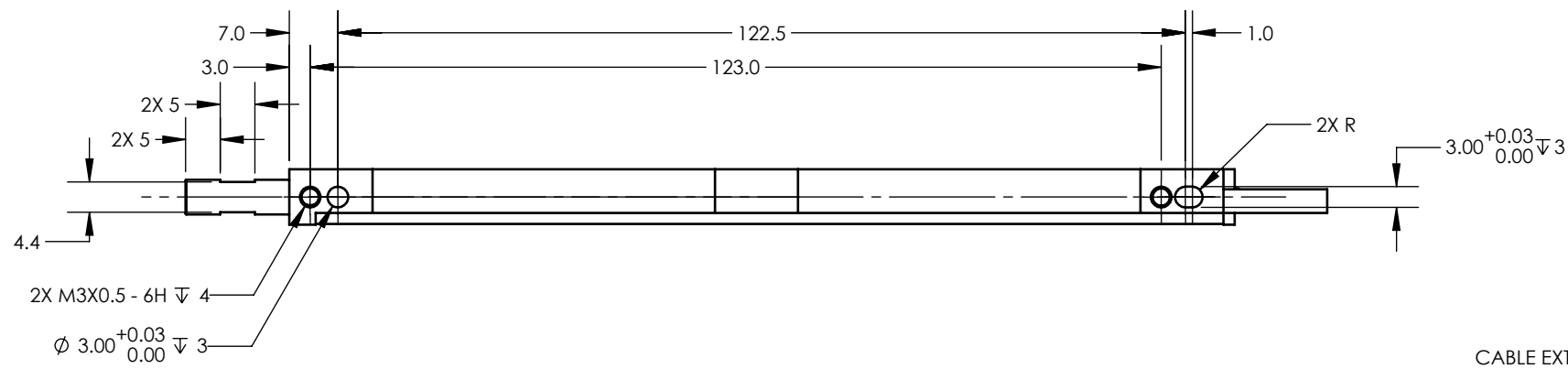
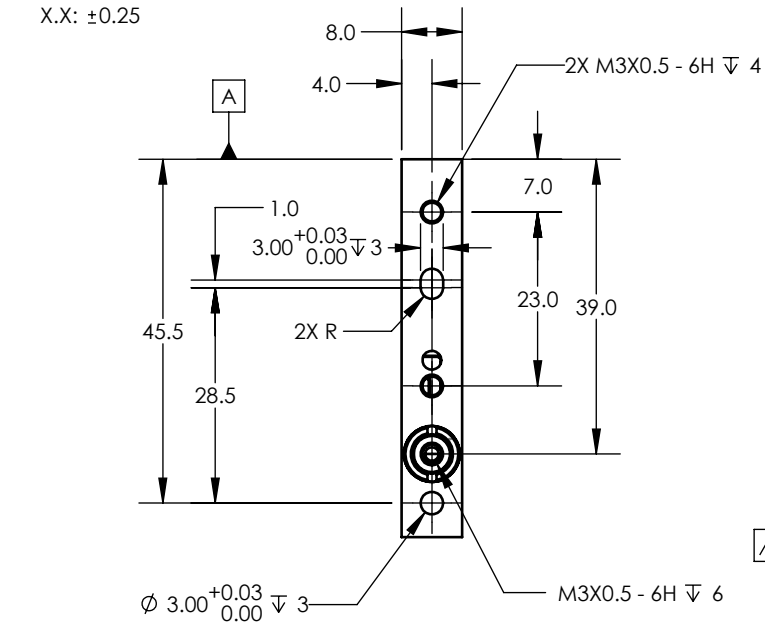
NOTES (UNLESS OTHERWISE SPECIFIED)

- 1. LINEAR SPECIFICATIONS:
 LINEAR STROKE: 50 +2 / 0 mm
 ENC. RESOLUTION(+A/-A;+B/-B): 5,1 um
 ENCODER REPEATABILITY: ± 4 COUNTS
 INDEX LOCATION(+Z/-Z): 2±1 mm FROM REAR STOP
 POLE PITCH: 16.2 mm
 OPERATING VOLTAGE: 24 Vdc
 COIL RESISTANCE: 18 Ohm / PHASE
 PEAK FORCE: 2.6 N @ 24 Vdc
 FORCE CONSTANT: 2.2 N/A
 MOVING MASS: 0.03 kg
 TOTAL MASS: 0.22 kg
- 2. VACUUM OPTION: CONSULT FACTORY
- 3. SPRING OPTION: YES
- 4. SHAFT OPTION: MALE, M4X0.7 - 8mm LENGTH
- 5. OPERATING TEMPERATURE: 0°C TO 40°C
- 6. PLATING: BLACK COATING
- 7. TOLERANCES
 X.: ±0.5
 X.X: ±0.25

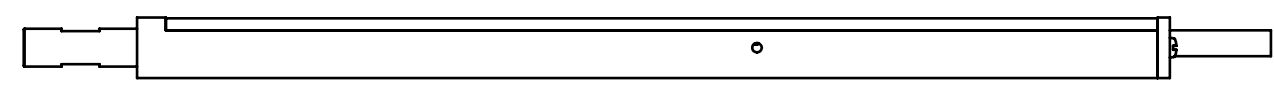
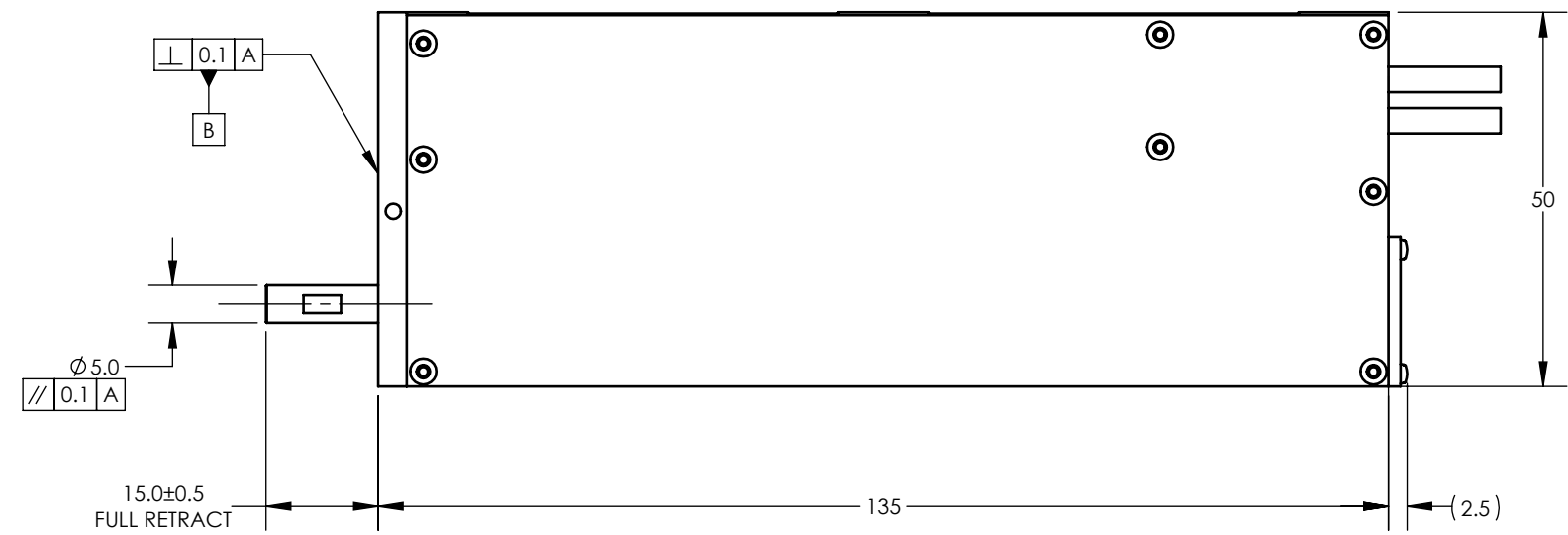
REVISIONS				
REV	ECR	DESCRIPTION	DATE	APPROVED
A	7897	INITIAL RELEASE	5/26/2022	TW

B

B



CABLE EXT.
 PIGTAIL(LG=0.5m)DB-26P
 FLYING LEAD(LG=3m)DB-15,
 POWER



PIGTAIL

PIN No	HDB-26P
1	(L) PH. A+
2	(L) PH. B+
3	(L) PH. Z+
4	NC
5	NC
6	NC
7	NC
8	NC
9	NC
10	(L) PH. A-
11	(L) PH. B-
12	(L) PH. Z-
13	NC
14	NC
15	NC
16	NC
17	NC
18	NC
19	+5 VDC
20	5V RTN
21	NC
22	L. COIL (U)
23	L. COIL (V)
24	L. COIL (W)
25	NC
26	NC

FLYING LEAD

PIN No	DB-15P
1	PH. A+
2	PH. Z+
3	PH. B+
4	+5 Vdc
5	NC
6	NC
7	NC
8	NC
9	PH. A -
10	PH. Z -
11	PH. B -
12	5V RTN
13	NC
14	NC
15	NC

PIN No	PHOENIX. 6P
1	GND
2	+V
3	MOTOR U
4	MOTOR V
5	MOTOR W
6	NC

UNLESS OTHERWISE SPECIFIED ALL DIMENSIONS ARE IN MM BREAK EDGES AND REMOVE BURRS TOLERANCES X.: ±0.5 X.X: ±0.25 CONCENTRICITY: ±0.025 ROUNDNESS: ±0.025 EDGE BREAKS: 0.2 MAX ALL DIMENSIONS AND TOLERANCES ARE FINAL	MATERIAL: SEE BOM	NAME TW	DATE 5/26/2022	SMAC 5807 VAN ALLEN WAY CARLSBAD CA, 92008 (760) 929-7588	
	FINISH: SEE BOM	DWN BY TMV	5/26/2022		
	MACHINE FINISH: 1.6	ENG APP TMV	5/26/2022		MOVING COIL ACTUATORS LINEAR ACTUATOR
	INTERPRET PER: ASME Y14.5-2009	MFG APP QA APP			PROPRIETARY AND CONFIDENTIAL THE INFORMATION CONTAINED IN THIS DRAWING IS THE SOLE PROPERTY OF SMAC. ANY REPRODUCTION IN PART OR AS A WHOLE WITHOUT THE WRITTEN PERMISSION OF SMAC IS PROHIBITED.
REF. NUMBER CONTRACT	LCA8-050 STD	SIZE: B	PART NO: LCA8-050-1X-3	REV: A	
SCALE: 1:1			DO NOT SCALE	SHEET: 1 / 1	

A

A