

The LITE PRO series is represented by the extremely compact 4-quadrants drives perfect matched to control motoroller 60. This series features as standard CanOpen interface and a complete programmable version with integral Motion Process Unit, that allows stand alone and network architecture operation.

FEATURES

- > **STANDARD FEEDBACK TTL ENCODER AND HALL SENSOR**
- > **DIGITAL I/O: UP TO 8 DIGITAL INPUTS AND 1 OR 2 DIGITAL OUTPUTS CUSTOMIZABLE WITH SEVERAL BUILT-IN FUNCTIONS**
- > **CONTROL: STANDARD PI CONTROL LOOP**
- > **SERVO MODES: TORQUE, VELOCITY AND POSITION WITH S-CURVE PROFILE**
- > **INTERNAL SCRIPT**
- > **EXTREME COMPACT DESIGN**
- > **USB PROGRAMMING KEY**

INTERFACE

- > **ANALOG VELOCITY AND TORQUE COMMAND $\pm 10V$**
- > **CANopen**



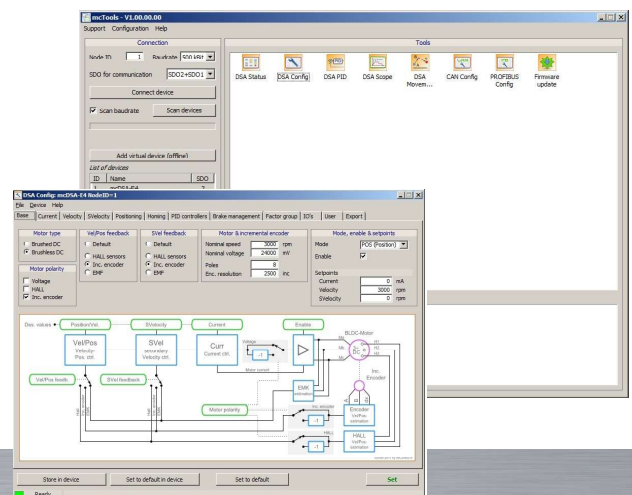
COMPACT AND PROFITABLE

PRODUCT DATA

FEATURE	UNITS	LPRO E40
Input voltage	VDC	48
Efficiency at rated power	%	>95
Auxiliary supply voltage	VDC	9 ... 30
Continuous current	Arms	8
Peak current	Arms	24
Ambient operating temperature	°C	0 to + 40°
Maximum humidity	%	5÷85% not condensing
Mounting method		Wall mounting DIN Rail
Dimensions	LxWxH mm	110x22,5x77
Weight	gr	110
Digital IN		4
Digital OUT		1

LITE PRO USER INTERFACE

- > EASY AND INTUITIVE PC SOFTWARE ALLOWS A FAST PARAMETERIZATION OF THE LITE PRO
- > SIMPLE SCOPE
- > SCRIPT EDITING



SEE IT BEFORE IT HAPPENS

**MOTOR
POWER**
COMPANY