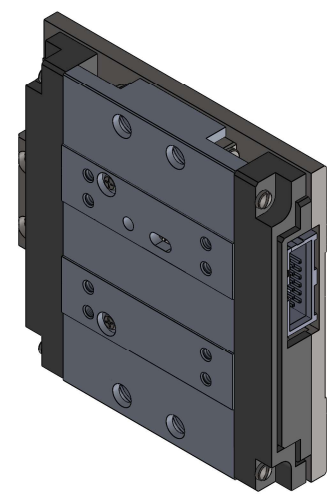
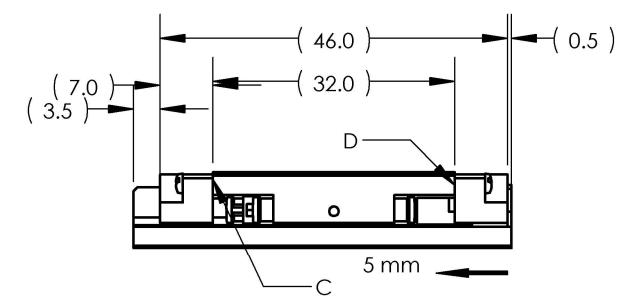
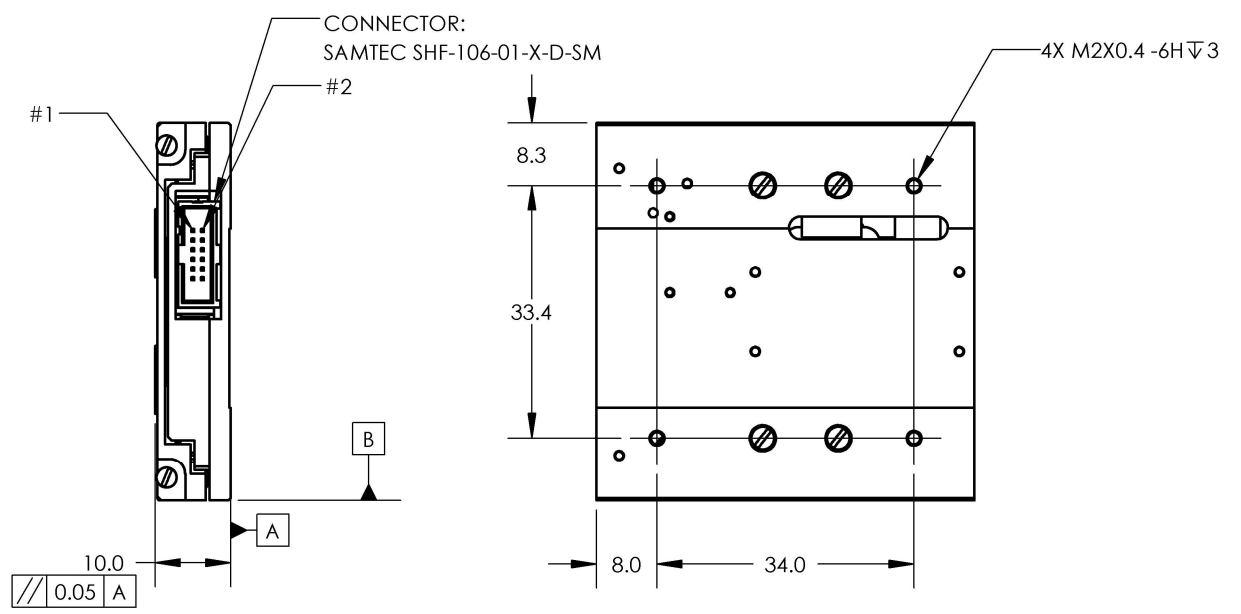
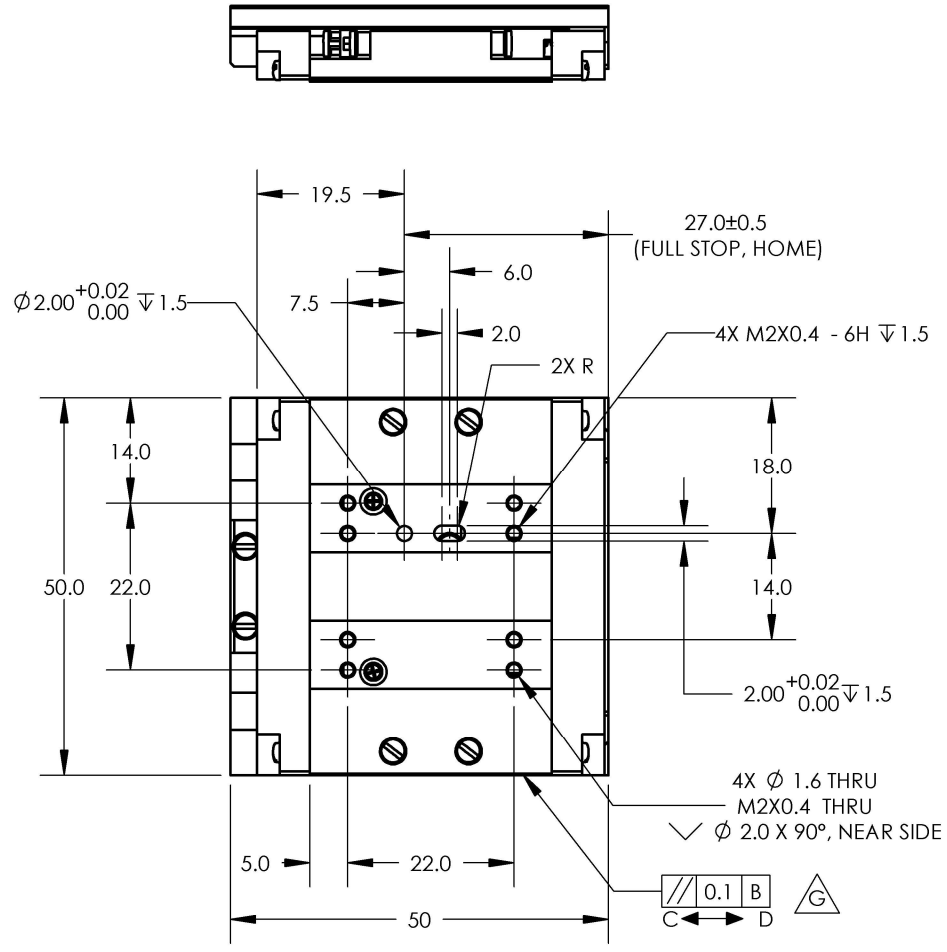


NOTES (UNLESS OTHERWISE SPECIFIED)

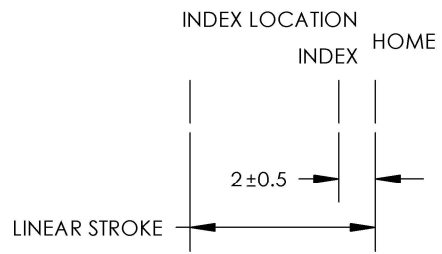
- 1. LINEAR STROKE: 5 mm, 100 μm PARALLELISM  $\triangle G$
- 2. ENCODER RESOLUTION: 5, 1, 0.1, 0.05 μm
- 3. PEAK FORCE: 3.0 N @ 24Vdc
- 4. FORCE CONSTANT: 2.0 N/A  $\triangle F$
- 5. MAXIMUM CURRENT: 1.5 A
- 6. RESISTANCE: 16.4 ± 10 % Ohm (WITH CABLE LAH-P12-26)
- 7. MOVING MASS: 20 g
- 8. TOTAL MASS: 80 g (W/O CABLE LAH-P12-26)
- 9. CONNECTOR: SAMTEC 12 PIN
- 10. LINEAR GUIDE: ANTI-CREEP CROSS ROLLER
- 11. SPRING RETURN: OPTIONAL
- 12. OPERATING TEMPERATURE: 0 °C TO 40 °C
- 13. TOLERANCES  
X.: ±0.5  
X.X: 0.25

REVISIONS				
REV	ECR	DESCRIPTION	DATE	APPROVED
E	6346	RE-DRAWN	3/7/2018	TW
F	6450	3.0N WAS 2.2N, 2.0 N/A WAS 1.5 N/A	5/1/2018	TW
G	6957	ADD PARALLELISM SPEC ON THE MOVING PLATE	10/31/19	CP



SAMTEC SHF-106-01-X-D-SM PINOUT

PIN No	DETAILS
1	+5 VDC
2	GND
3	B-
4	B+
5	Z+
6	Z-
7	A+
8	A-
9	COIL -
10	COIL -
11	COIL +
12	COIL +



<p>UNLESS OTHERWISE SPECIFIED</p> <p>ALL DIMENSIONS ARE IN MM</p> <p>BREAK EDGES AND REMOVE BURRS</p> <p>TOLERANCES</p> <p>X.: ±0.5 X.X: ±0.1</p> <p>X.XX: ±0.03 ANGLE: ±0.1°</p> <p>CONCENTRICITY: ±0.025</p> <p>ROUNDNESS: ±0.025</p> <p>EDGE BREAKS: 0.2 MAX</p> <p>ALL DIMENSIONS AND TOLERANCES ARE FINAL</p>	<p>MATERIAL: SEE BOM</p> <p>FINISH: SEE BOM</p> <p>MACHINE FINISH: 1.6</p> <p>INTERPRET PER: ASME Y14.5-2009</p> <p>THIRD ANGLE PROJECTION</p>	<table border="1"> <tr><th>NAME</th><th>DATE</th></tr> <tr><td>DWN BY: TW</td><td>2/22/2018</td></tr> <tr><td>CHK BY: TMV</td><td>2/22/2018</td></tr> <tr><td>ENG APP: TMV</td><td>2/22/2018</td></tr> <tr><td>MFG APP: QA APP</td><td></td></tr> </table>	NAME	DATE	DWN BY: TW	2/22/2018	CHK BY: TMV	2/22/2018	ENG APP: TMV	2/22/2018	MFG APP: QA APP		<p><b>SMAC</b></p> <p>5807 VAN ALLEN WAY CARLSBAD CA, 92008 (760) 929-7588</p> <p>MOVING COIL ACTUATORS</p> <p>TITLE: SLA10-005-5X-1</p>		
	NAME	DATE													
	DWN BY: TW	2/22/2018													
	CHK BY: TMV	2/22/2018													
ENG APP: TMV	2/22/2018														
MFG APP: QA APP															
<table border="1"> <tr><th>REF. NUMBER</th><td>SLA10-005</td></tr> <tr><th>CONTRACT</th><td>STD</td></tr> </table>	REF. NUMBER	SLA10-005	CONTRACT	STD	<table border="1"> <tr><th>SIZE</th><td>B</td></tr> <tr><th>PART NO:</th><td>SLA10-005-5X-1</td></tr> <tr><th>SCALE:</th><td>1:1</td></tr> <tr><th>SHEET:</th><td>1 / 1</td></tr> </table>	SIZE	B	PART NO:	SLA10-005-5X-1	SCALE:	1:1	SHEET:	1 / 1	<p>REV: <b>G</b></p> <p>DO NOT SCALE</p>	
REF. NUMBER	SLA10-005														
CONTRACT	STD														
SIZE	B														
PART NO:	SLA10-005-5X-1														
SCALE:	1:1														
SHEET:	1 / 1														