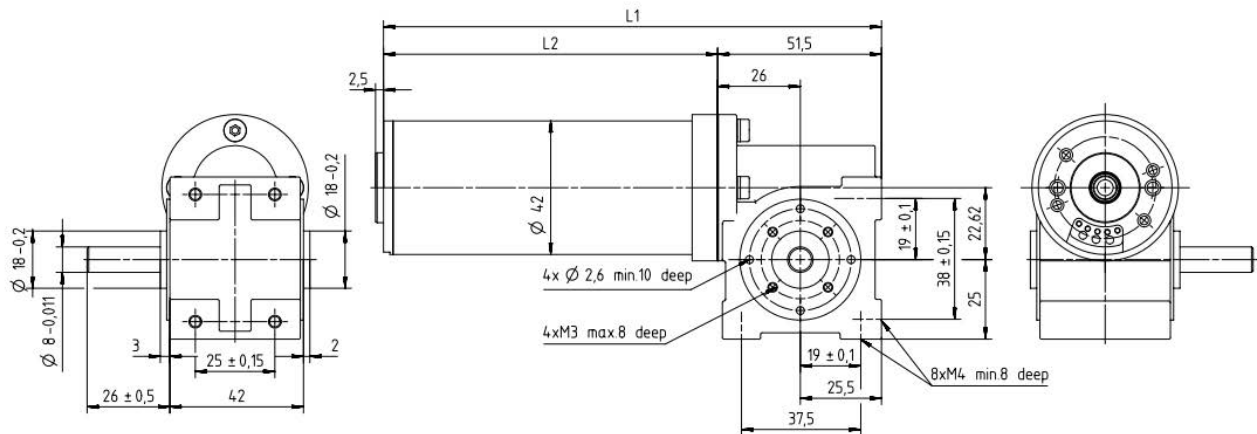


# Motor ECM42 with worm gear SN22,6

- zinc die-cast gearhousing, hardened steel worm wheel, permanent grease lubrication, output with ball bearing, optional second shaft or output shaft left
- Other reductions, output shaft or connection cable on request



**Gear reduction table ECM42xXX/I+ SN22,6**

Application on request

Gear reduction	Efficiency of the gear	Speed at motor-speed 3000rpm	Nominal torque in S1-operation		
			ECM42x15/I L2 = 70 mm	ECM42x30/I L2 = 85 mm	ECM42x45/I L2 = 100 mm
[i = x:1]	[%]	[1/min]	[Ncm]	[Ncm]	[Ncm]
7	71	428,5	19,88	44,73	64,61
15	56	200	33,6	75,6	109,2
30	39	100	46,8	105,3	152,1
40	34	75	54,4	122,4	176,8
68	33	44	89,76	201,96	291,72

Gear reduction	Efficiency of the gear	Speed at motor-speed 3000rpm	Nominal torque in S3-operation		
			ECM42x15/I L2 = 70 mm	ECM42x30/I L2 = 85 mm	ECM42x45/I L2 = 100 mm
[i = x:1]	[%]	[1/min]	[Ncm]	[Ncm]	[Ncm]
7	78	428,5	32,76	73,71	106,47
15	66	200	59,4	133,65	193,05
30	50	100	90	202,5	292,5
40	42	75	100,8	226,8	327,6
68	38	44	155,04	348,84	500*

\*) Motor have to be operated with current limitation

## General gear data

Material worm wheel		Brass
Maximum torque	[Ncm]	500
Permissible shaft load	[N] (axial / radial)	40 / 40
Gear length	[mm]	51

Stand: 24. Juli 2020 – changes reserved