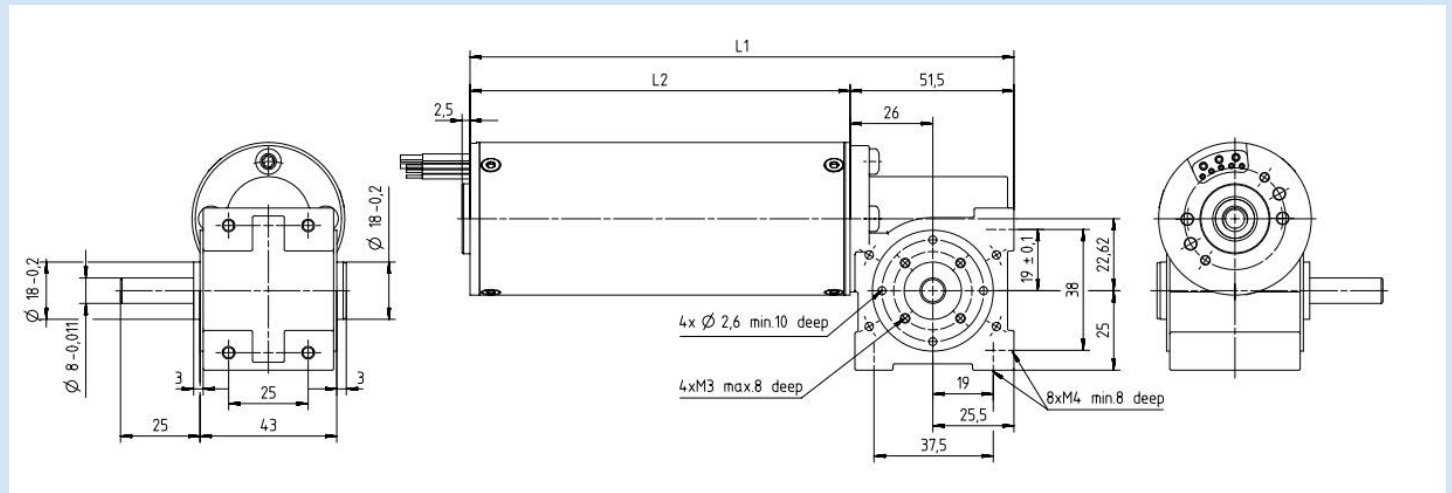


# Motor ECM48 with worm gear SN22,6

- zinc die-cast gearhousing, hardened steel worm wheel, permanent grease lubrication, output with ball bearing, optional second shaft or output shaft left
- Other reductions, output shaft or connection cable on request



**Gear reduction table ECM48xXX/I+ SN22,6**

Application on request

Gear reduction	Efficiency of the gear	Speed at motor-speed 3000rpm	Nominal torque in S1-operation		
			ECM48x20/I L2 = 80 mm	ECM48x40/I L2 = 100 mm	ECM48x60/I L2 = 120 mm
[i = x:1]	[%]	[1/min]	[Ncm]	[Ncm]	[Ncm]
7	71	428,5	29,82	73,52	114,31
15	56	200	50,4	134,4	193,2
30	39	100	70,2	187,2	269,1
40	34	75	81,6	217,6	312,8
68	33	44	134,64	359,04	500*

Gear reduction	Efficiency of the gear	Speed at motor-speed 3000rpm	Nominal torque in S3-operation		
			ECM48x20/I L2 = 80 mm	ECM48x40/I L2 = 100 mm	ECM48x60/I L2 = 120 mm
[i = x:1]	[%]	[1/min]	[Ncm]	[Ncm]	[Ncm]
7	78	428,5	49,14	131,04	188,37
15	66	200	89,1	237,6	341,55
30	50	100	135	360	500*
40	42	75	151,2	403,2	500*
68	38	44	232,56	500*	500*

\*) Motor have to be operated with current limitation

## General gear data

Material worm wheel		Brass
Maximum torque	[Ncm]	500
Permissible shaft load	[N] (axial / radial)	40 / 40
Gear length	[mm]	51

Stand: 24. Juli 2020 – changes reserved