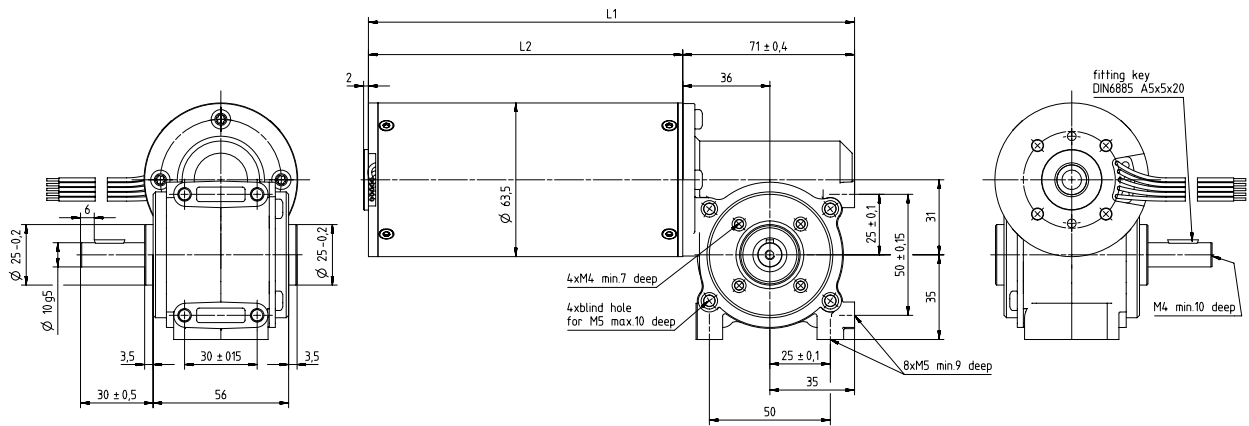


# Motor ECM63 with worm gear SN31

- zinc die-cast gearhousing, hardened steel worm wheel, permanent grease lubrication, output with ball bearing, optional second shaft or output shaft left
- Other reductions, output shaft or connection cable on request



**Gear reduction table ECM63xXX/I+ SN31**

Application on request

Gear reduction	Efficiency of the gear	Speed at motor-speed 3000rpm	Nominal torque in S1-operation		
			ECM63x20/I L2 = 90 mm	ECM63x40/I L2 = 110 mm	ECM63x60/I L2 = 130 mm
[i = x:1]	[%]	[1/min]	[Ncm]	[Ncm]	[Ncm]
7	69	428,5	57,96	144,9	193,2
10	66	300	79,2	198	264
15	62	200	111,2	279	372
25	52	120	156	390	520
38	46	78,9	209,76	524,4	699,2
50	40	60	240	600	800

Gear reduction	Efficiency of the gear	Speed at motor-speed 3000rpm	Nominal torque in S3-operation		
			ECM63x20/I L2 = 90 mm	ECM63x40/I L2 = 110 mm	ECM63x60/I L2 = 130 mm
[i = x:1]	[%]	[1/min]	[Ncm]	[Ncm]	[Ncm]
7	78	428,5	98,28	245,7	327,6
10 <sup>#</sup>	79	300	142,2	355,5	474
15 <sup>#</sup>	77	200	207,9	519,75	693
25	58	120	261	652,5	870
38	50	78,9	342	855	1140
50	44	60	396	990	1200*

\* ) Motor have to be operated with current limitation

# ) plastic design

## General gear data

Material worm wheel		Plastic	Brass
Maximum torque	[Ncm]	800	1200
Permissible shaft load	[N] (axial / radial)	200 / 500	200 / 500
Gear length	[mm]	71	71

Stand: 24. Juli 2020 – changes reserved