

DRM 50-5/50 to RS485 quick guide

Customer	Any
Data	17.06.2021
Written by	Cristian Zivieri
Direct to	<b>Customers</b>
In copy	-
Approved by	-

This page  
intentionally  
left blank

**Motor Power Company s.r.l.**

Via Leonardo Da Vinci, 4  
42024 Castelnovo Sotto Reggio Emilia - Italia  
Tel. +39 0522 682710 - Fax +39 0522 683552  
info@motorpowerco.it - motorpowerco.com  
Cap. Soc. 250.000,00€ i.v. - R.E.A. di RE 175521  
Iscr.Reg.Impr. di RE n.01308390358 - N. Mecc. RE 010210  
C.F. e P.IVA IT 01308390358



<b>1 Summary</b>	2
1. Required.....	3
2. Ethernet cable to converter .....	3
3. Connection to converter.....	4
4. DIP SWITCH setting .....	5
5. Connect to PC .....	5

**Motor Power Company s.r.l.**

Via Leonardo Da Vinci, 4  
42024 Castelnuovo Sotto Reggio Emilia - Italia  
Tel. +39 0522 682710 - Fax +39 0522 683552  
info@motorpowerco.it - motorpowerco.com  
Cap. Soc. 250.000,00€ i.v. - R.E.A. di RE 175521  
Iscr.Reg.Impr. di RE n.01308390358 - N. Mecc. RE 010210  
C.F. e P.IVA IT 01308390358

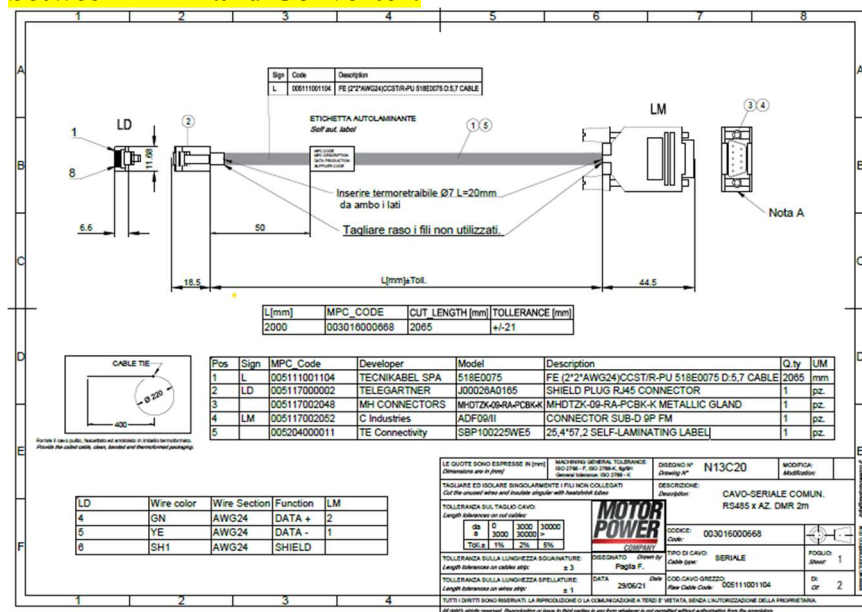


## 1. Required

- Servo-Drive DMR 50-5/50
- Ethernet standard cable with RJ45. In alternative, our complete cable PN 003016000668
- USB to RS485 converter: 005016000175 CONVERTITORE INTERFACCIA PC USB/485 USB2-H-5001-M
- PC with BPRO Interface installed

### IMPORTANT:

If you purchased complete cable PN 003016000668, skip steps 2 and 3, and connect cable directly between DMR and Converter.



## 2. Ethernet cable to converter

Connect RJ45 to connector N1 of DMR 50-5/50.



### Motor Power Company s.r.l.

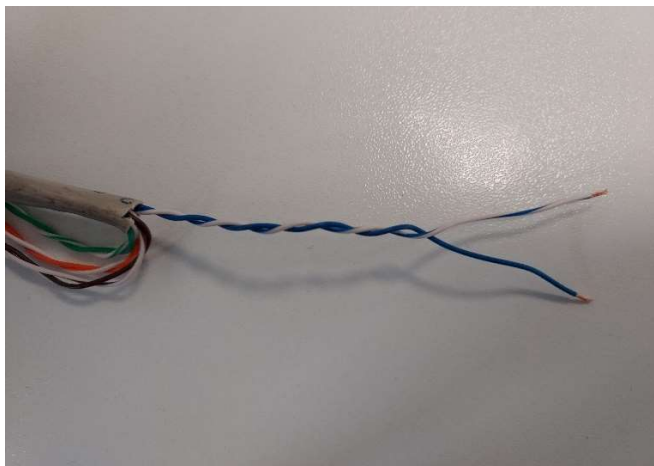
Via Leonardo Da Vinci, 4  
42024 Castelnovo Sotto Reggio Emilia - Italia  
Tel. +39 0522 682710 - Fax +39 0522 683552  
info@motorpowerco.it - motorpowerco.com  
Cap. Soc. 250.000,00€ i.v. - R.E.A. di RE 175521  
Iscr.Reg.Impr. di RE n.01308390358 - N. Mecc. RE 010210  
C.F. e P.IVA IT 01308390358

**MOTOR  
POWER**  
COMPANY

On the other side, ethernet cable must be free wires. Relevant wires are 2:

BLUE

WHITE/BLUE

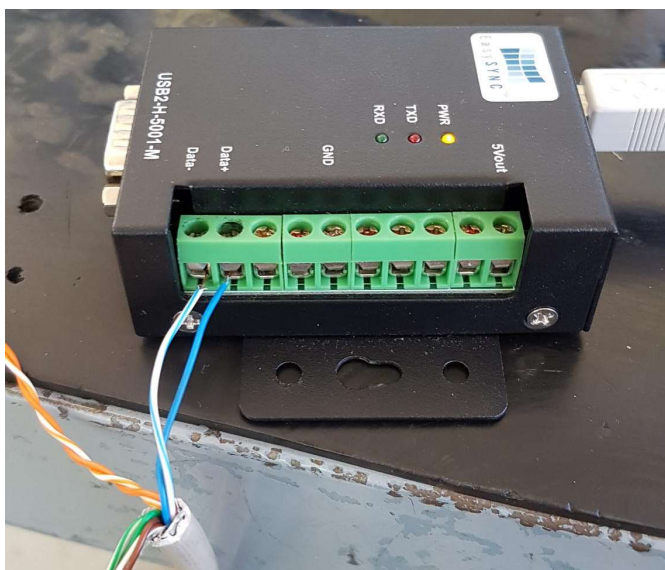


### 3. Connection to converter

Free wires goes in the terminal block of USB/RS485 converter as shown in pictures:

**BLUE/WHITE →DATA-**

**BLUE→DATA+**



**Motor Power Company s.r.l.**

Via Leonardo Da Vinci, 4  
42024 Castelnovo Sotto Reggio Emilia - Italia  
Tel. +39 0522 682710 - Fax +39 0522 683552  
info@motorpowerco.it - motorpowerco.com  
Cap. Soc. 250.000,00€ i.v. - R.E.A. di RE 175521  
Iscr.Reg.Impr. di RE n.01308390358 - N. Mecc. RE 010210  
C.F. e P.IVA IT 01308390358

**MOTOR  
POWER**  
COMPANY

## 4. DIP SWITCH setting

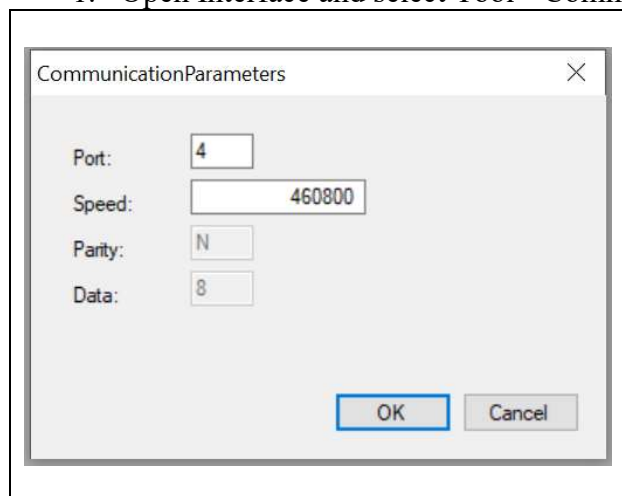
IMPORTANT!: dip switch on converter must be set as below:



## 5. Connect to PC

Connect USB cable to your PC. Open BPRO Interface, now you are ready to communicate. Follow the steps:

1. Open Interface and select Tool->Communication Parameters

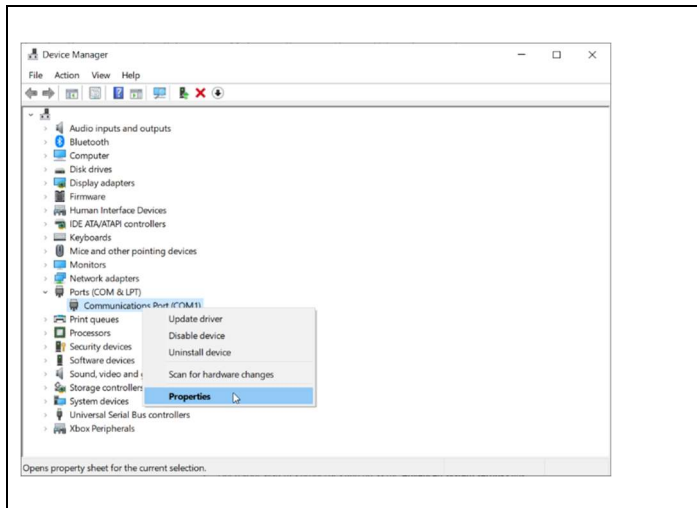


2. Be sure that speed is set as in figure
3. Verify your Com Port in UI is the same as the one you set in your Device Management. If not change.

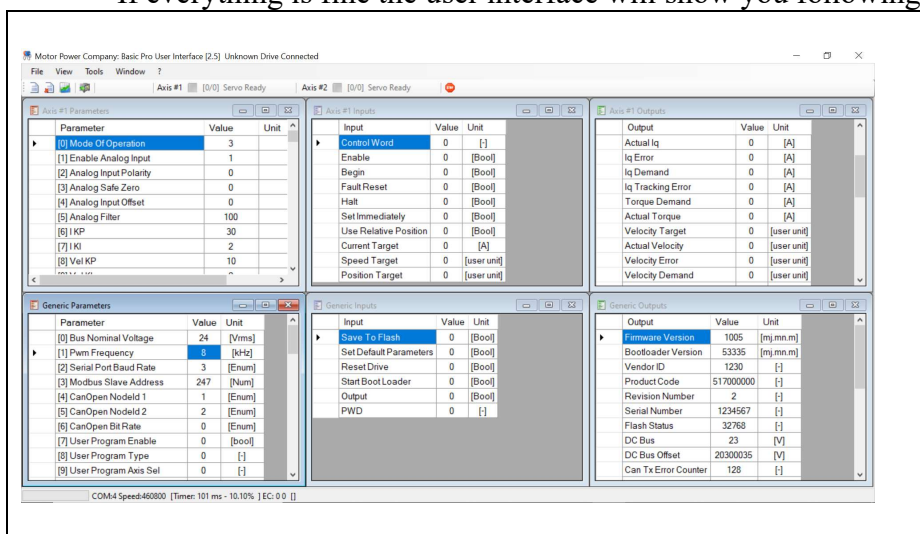
### **Motor Power Company s.r.l.**

Via Leonardo Da Vinci, 4  
42024 Castelnuovo Sotto Reggio Emilia - Italia  
Tel. +39 0522 682710 - Fax +39 0522 683552  
info@motorpowerco.it - motorpowerco.com  
Cap. Soc. 250.000,00€ i.v. - R.E.A. di RE 175521  
Iscr.Reg.Impr. di RE n.01308390358 - N. Mecc. RE 010210  
C.F. e P.IVA IT 01308390358

**MOTOR  
POWER**  
COMPANY



- If everything is fine the user interface will show you following windows



### Motor Power Company s.r.l.

Via Leonardo Da Vinci, 4  
 42024 Castelnovo Sotto Reggio Emilia - Italia  
 Tel. +39 0522 682710 - Fax +39 0522 683552  
 info@motorpowerco.it - motorpowerco.com  
 Cap. Soc. 250.000,00€ i.v. - R.E.A. di RE 175521  
 Iscr.Reg.Impr. di RE n.01308390358 - N. Mecc. RE 010210  
 C.F. e P.IVA IT 01308390358

**MOTOR  
 POWER**  
 COMPANY

# END DOCUMENT

**Motor Power Company s.r.l.**

Via Leonardo Da Vinci, 4  
42024 Castelnuovo Sotto Reggio Emilia - Italia  
Tel. +39 0522 682710 - Fax +39 0522 683552  
info@motorpowerco.it - motorpowerco.com  
Cap. Soc. 250.000,00€ i.v. - R.E.A. di RE 175521  
Iscr.Reg.Impr. di RE n.01308390358 - N. Mecc. RE 010210  
C.F. e P.IVA IT 01308390358

**MOTOR  
POWER**  
COMPANY